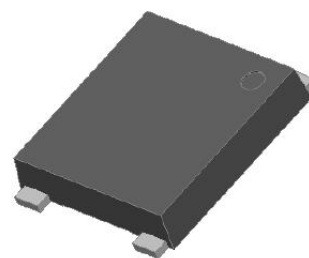




## DBF3005 THRU DBF310

### Features

- Glass passivated chip;
- Ideal for automated placement
- High surge current capability
- Low forward voltage drop
- Design for surface mount application

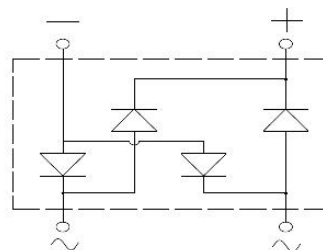


### Typical Applications

General purpose use in AC/DC bridge full wave rectification for SMPS, lighting ballast, adapter, battery charger, home appliances, office equipment, and telecommunication applications.

### Mechanical Data

- Package: DBF,  
Molding compound meets UL 94V-0 flammability rating, RoHS compliant
- Terminals, Tin plated leads, solderable per J-STD-002 and JESD22-B102
- Polarity: As marked on body



### Maximum Ratings and Electrical Characteristics

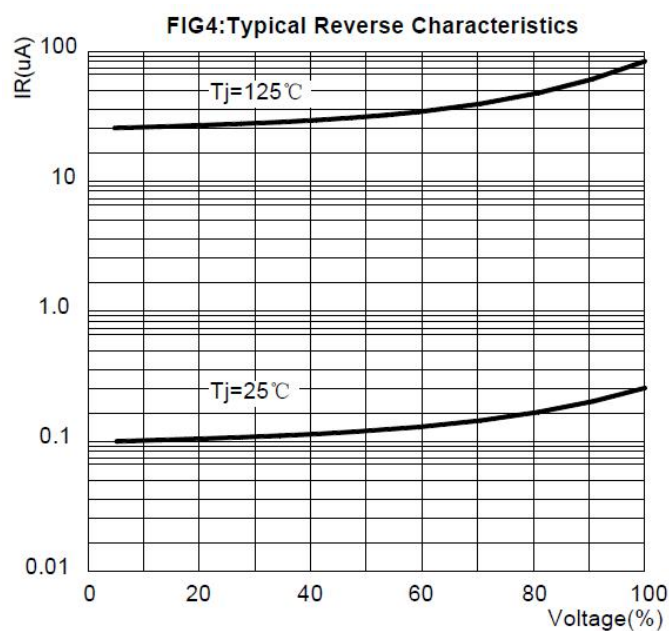
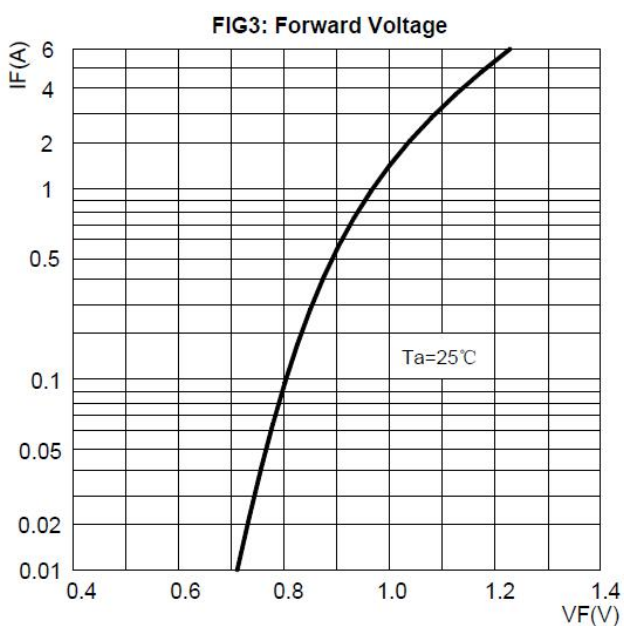
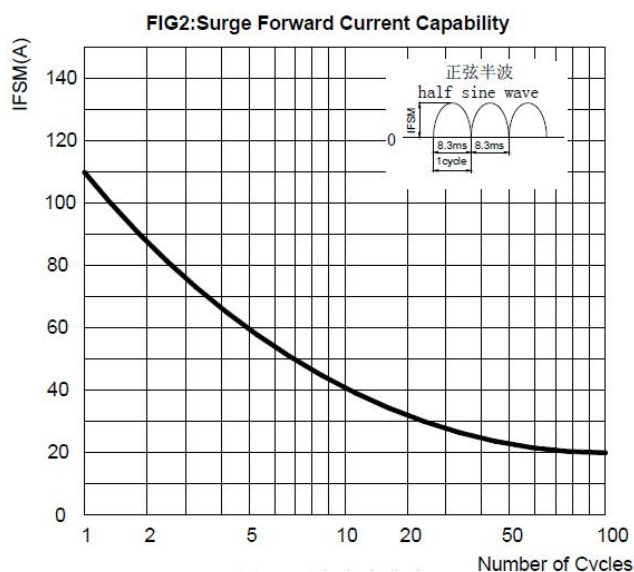
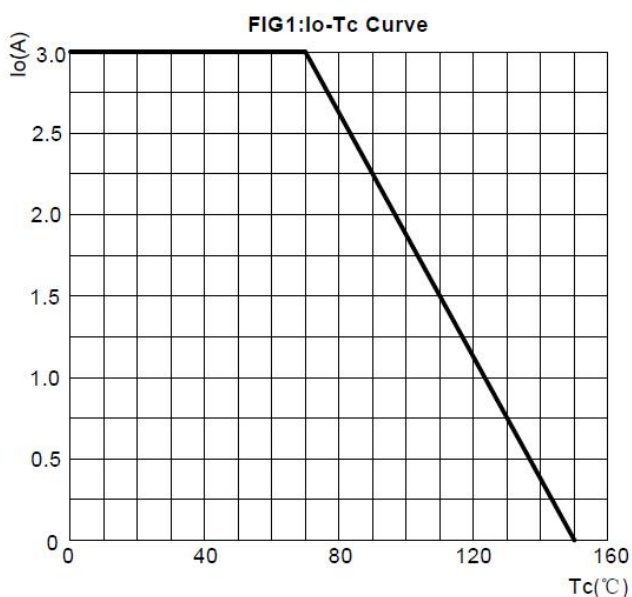
(Ta=25°C Unless Otherwise Specified)

TYPE NUMBER	SYMBOL	DBF3005	DBF301	DBF302	DBF304	DBF306	DBF308	DBF310	UNITS	
Maximum Repetitive Peak Reverse Voltage	VRRM	50	100	200	400	600	800	1000	V	
Maximum RMS Voltage	VR(RMS)	35	70	140	280	420	560	720		
Maximum DC Blocking Voltage	VDC	50	100	200	400	600	800	1000		
Maximum Average Forward Rectified Current@60HZ sine wave, R-load TC=70°C	IO(AV)	3							A	
Non-Repetitive Peak Forward Surge Current 8.3ms Single half @60HZ, Tj=25°C	IFSM	110							A	
Current squared time@1ms≤t≤8.3ms, Tj=25°C, Rating of per diode	I²t	50.2							A²S	
Maximum instantaneous forward voltage at @IF=1.5A @IF=3.0A	VFM	1.0							V	
		1.1								
Peak Reverse Current At Rated DC Blocking Voltage @TA = 25°C @TA = 125°C	IRM	5							uA	
		300								
Typical Thermal Resistance per leg	Between Junction and Ambient	R θ JA	55							°C/W
	Between Junction and Lead	R θ JL	15							
	Between Junction and Case	R θ JC	10							
Operating junction temperature range	TJ	-55 TO 150							°C	
Operating and Storage Temperature Range	TSTG	-55 TO 150							°C	



### DBF3005 THRU DBF310

#### ■ 特性曲线 (典型) Characteristics(Typical)



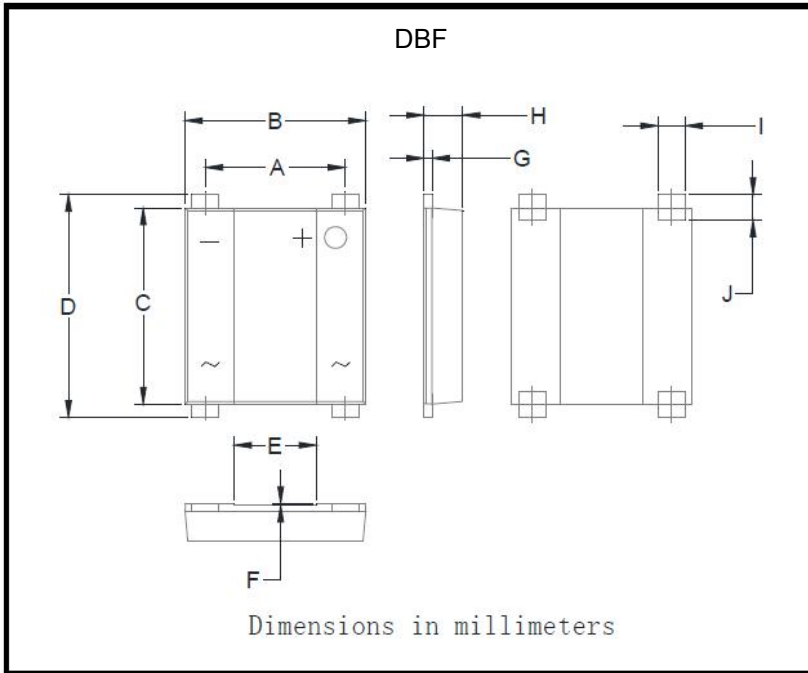
#### ■ Ordering Information (Example)

P/N	PACK	MINIMUM PACKAGE(PCS)	INNER BOX QUANTITY(PCS)	CARTON QUANTITY(PCS)	DELIVERY MODE
DBF3005-DBF310	T/R	3000	6000	60000	13"



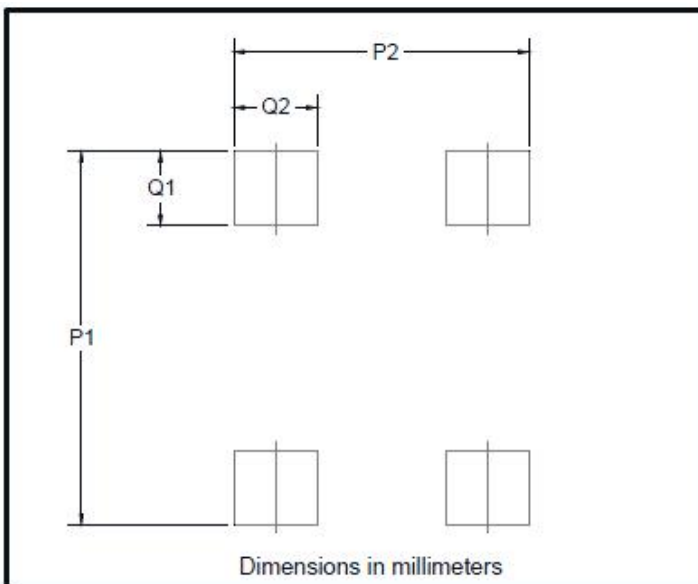
## DBF3005 THRU DBF310

### ■ Outline Dimensions



DBF		
Dim	Min	Max
A	5.00	5.20
B	6.50	6.70
C	7.20	7.40
D	7.90	8.60
E	2.90	3.10
F	0.04	0.08
G	0.25	0.40
H	1.30	1.50
I	0.95	1.15
J	0.70	1.05

### ■ Suggested pad layout



Dim	Min
P1	9.15
P2	7.10
Q1	1.80
Q2	2.00